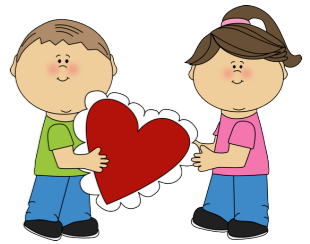


"A love of learning has a lot to do with learning that we are loved."



FEBRUARY 2024

Sacred Heart School, 620 Valley Brook Avenue, Lyndhurst, NJ 07071 * 201-939-4277

Sunday	Monday	Tuesday	Wednesday	Thursday	Friday	Saturday																																																																																											
<p>January 2024</p> <table border="1"> <tr><td>Sunday</td><td>Monday</td><td>Tuesday</td><td>Wednesday</td><td>Thursday</td><td>Friday</td><td>Saturday</td></tr> <tr><td></td><td>1</td><td>2</td><td>3</td><td>4</td><td>5</td><td>6</td></tr> <tr><td>7</td><td>8</td><td>9</td><td>10</td><td>11</td><td>12</td><td>13</td></tr> <tr><td>14</td><td>15</td><td>16</td><td>17</td><td>18</td><td>19</td><td>20</td></tr> <tr><td>21</td><td>22</td><td>23</td><td>24</td><td>25</td><td>26</td><td>27</td></tr> <tr><td>28</td><td>29</td><td>30</td><td>31</td><td></td><td></td><td></td></tr> </table>	Sunday	Monday	Tuesday	Wednesday	Thursday	Friday	Saturday		1	2	3	4	5	6	7	8	9	10	11	12	13	14	15	16	17	18	19	20	21	22	23	24	25	26	27	28	29	30	31					<p>March 2024</p> <table border="1"> <tr><td>Sunday</td><td>Monday</td><td>Tuesday</td><td>Wednesday</td><td>Thursday</td><td>Friday</td><td>Saturday</td></tr> <tr><td></td><td></td><td></td><td></td><td>1</td><td>2</td><td></td></tr> <tr><td>3</td><td>4</td><td>5</td><td>6</td><td>7</td><td>8</td><td>9</td></tr> <tr><td>10</td><td>11</td><td>12</td><td>13</td><td>14</td><td>15</td><td>16</td></tr> <tr><td>17</td><td>18</td><td>19</td><td>20</td><td>21</td><td>22</td><td>23</td></tr> <tr><td>24</td><td>25</td><td>26</td><td>27</td><td>28</td><td>29</td><td>30</td></tr> <tr><td>31</td><td></td><td></td><td></td><td></td><td></td><td></td></tr> </table>	Sunday	Monday	Tuesday	Wednesday	Thursday	Friday	Saturday					1	2		3	4	5	6	7	8	9	10	11	12	13	14	15	16	17	18	19	20	21	22	23	24	25	26	27	28	29	30	31								<p>1 STUDENTS DAY </p> <p>Free Dress Down Day</p>	<p>2 TEACHER/STAFF APPRECIATION & SPORTS DAY </p> <p>TAG DAY \$1.00 (Sports Shirts) 12:00 pm Dismissal CSW Faculty Luncheon NO AFTERCARE </p>	<p>3</p>
Sunday	Monday	Tuesday	Wednesday	Thursday	Friday	Saturday																																																																																											
	1	2	3	4	5	6																																																																																											
7	8	9	10	11	12	13																																																																																											
14	15	16	17	18	19	20																																																																																											
21	22	23	24	25	26	27																																																																																											
28	29	30	31																																																																																														
Sunday	Monday	Tuesday	Wednesday	Thursday	Friday	Saturday																																																																																											
				1	2																																																																																												
3	4	5	6	7	8	9																																																																																											
10	11	12	13	14	15	16																																																																																											
17	18	19	20	21	22	23																																																																																											
24	25	26	27	28	29	30																																																																																											
31																																																																																																	
<p>4</p>	<p>5 </p> <p>Gertrude Hawk Candy Sale Begins (Easter Candy)</p>	<p>6</p>	<p>7</p>	<p>8</p>	<p>9 </p> <p>Gr. 1-2 100th Day of School T2 PROGRESS REPORTS HSA Pizza Lunch </p>	<p>10</p>																																																																																											
<p>11</p>	<p>12</p>	<p>13 </p> <p>RED/PINK TAG DAY \$1.00 </p>	<p>14 </p> <p>9:00 am School Mass (Grade 5) </p>	<p>15 </p> <p>PreK-4 and Kindergarten 100th Day of School</p>	<p>16 </p> <p>SCHOOL CLOSED FOR PRESIDENTS DAY HOLIDAY</p>	<p>17</p>																																																																																											
<p>18</p>	<p>19 </p> <p>SCHOOL CLOSED HAPPY PRESIDENTS' DAY!</p>	<p>20</p>	<p>21</p>	<p>22</p>	<p>23 </p> <p>Stations of the Cross (Gr. 8) 8th Gr. Pizza Lunch </p>	<p>24</p>																																																																																											
<p>25 </p> <p>1:00-3:00 pm OPEN HOUSE 3:00 pm Basketball Games </p>	<p>26</p>	<p>27</p>	<p>28 </p> <p>Spring Auction Donations are Due</p>	<p>29</p>	<p>30 </p>	<p>Please turn over for other pertinent information.</p>																																																																																											

IMPORTANT

FEBRUARY

PLEASE NOTE

SCHOOL CLOSINGS

* When there is a School Closing, each family will receive a phone call through our Emergency Phone System. Your Caller ID will show 201-939-4277. Answer the phone and *wait a few seconds* for the message, do not hang up until the message is played. We will follow the Town of Lyndhurst regarding School Closings.

DELAYED OPENINGS

* When there is a Delayed School Opening due to inclement weather, school opens at 10:00 am, but **classes start at 10:20 am**. We will follow the Town of Lyndhurst regarding Delayed Openings. When a Delayed Opening takes place, the following information regarding LUNCH should be followed:

1. There will be NO HOT LUNCH to be purchased.
2. Please make sure your child eats a good breakfast and brings a snack. There will only be time allocated for snacks on delayed opening days.

* When school is Delayed, **THERE IS NO MORNING CARE BUT AFTERCARE WILL BE AVAILABLE.**



The Hot Lunch Program will be available Mondays to Thursdays. To order online: <https://rpmdiningservices.boonli.com/login> Fridays will be a Special Pizza Lunch.



February 5th, Monday Gertrude Hawk Easter Candy Sale begins



February 16th-19th SCHOOL CLOSED Presidents' Day Holiday



February 25th SCHOOL OPEN HOUSE 1:00-3:00 pm



201-939-4277

www.sacredheartlynd.org

@sacredheartlynd